

Enterprise

Corporate **Brochure**

Dedicated | Unlimited | *SpeedyFlex*

...unlimited data at blazing speed.

Table of Contents

»» Introduction	→	Page 03
»» Company Overview	→	Page 04
»» Our Services Offerings	→	Page 05
»» Our Services Offerings	→	Page 06
»» Our Clients	→	Page 07
»» Our Approach	→	Page 08
»» Case Study	→	Page 09
»» Pricing Options	→	Page 11
»» Project Timeline	→	Page 12
»» Contact Us	→	Page 13

Introduction

In today's data-driven environment, organizations rely on fast, stable, and secure internet access to power critical operations, enable real-time collaboration, and deliver uninterrupted digital services. At SpeedyLink Communications Limited, we provide a robust solution designed specifically for enterprises with high-volume internet needs—our Dedicated Unlimited Data service on Point-to-Point access.

Whether you're running a corporate headquarters, a government parastatal, an educational institution, a financial services firm, or any organization where internet downtime is not an option, SpeedyLink delivers enterprise-grade connectivity you can trust.

Our Dedicated Unlimited Data solution offers:

- Symmetrical upload and download speeds, enabling seamless video conferencing, data backups, cloud computing, and remote access
- A 1:1 contention ratio, meaning your bandwidth is reserved exclusively for your organization with no sharing or slowdowns during peak hours
- Unlimited data, eliminating the risk of throttling or usage limits that can hinder productivity
- Point-to-Point connectivity, providing a direct, high-capacity link between your premises and our network core for unmatched speed and reliability
- Priority technical support and proactive network monitoring to ensure optimal performance at all times

This solution is ideal for institutions and businesses where consistent heavy data usage, security, and uptime are mission-critical. From powering ERP systems and digital platforms to supporting hundreds of users and devices simultaneously, SpeedyLink's Dedicated Unlimited Data ensures your organization remains connected, competitive, and efficient.

Why Choose SpeedyLink?

Affordable Prices:

We provide a range of location-based internet service solutions at budget-friendly rates for residence and businesses.

Scalable & Flexible Plans:

We provide flexible and personalized internet plans that fits your unique needs and budget:

Highly responsive Customer Care:

We provide reliable and responsive support that keeps you connected.



Company Overview

About Us

SpeedyLink Communications Limited is a licensed Internet Service Provider, duly accredited by the Nigerian Communications Commission (NCC), and recognized as a reliable provider of advanced internet solutions for both enterprise and residential users in Abeokuta.

We proudly serve a diverse clientele—including corporate organizations, non-profits, educational institutions, healthcare facilities, hotels, and recreational establishments—by delivering high-performance connectivity solutions tailored to meet their unique operational needs.

Our reputation for excellence is built on a strong foundation of reliability, scalability, and a steadfast commitment to customer satisfaction. With a broad portfolio of industry-leading services—such as Point-to-Point and Point-to-Multipoint connectivity—we ensure seamless, secure, and efficient internet access that supports the evolving demands of our growing customer base.

Our Vision

To be Nigeria's leading broadband internet service provider, connecting sub-urban and rural communities to the world.

Our Mission

Leverage cutting-edge technology platforms to deliver fast, dependable, and high-quality wireless internet service at affordable rates to Nigerians in rural and semi-urban areas who need seamless internet connectivity.



Our Service Offerings

Dedicated Unlimited Data

Dedicated Unlimited Data Plan

Uninterrupted, High-Capacity Connectivity for Enterprise Performance Experience seamless and high-performance connectivity with our Dedicated Unlimited Data Plan, purpose-built for businesses and high-demand internet users who require guaranteed performance and reliability. Delivering consistent speeds of 30 Mbps and above with dedicated bandwidth, this plan ensures optimal network performance around the clock — day or night.

Powered by a robust Point-to-Point (PTP) infrastructure, the service establishes a direct, dedicated link from our repeater station to your premises, providing unmatched speed, reliability, and data security. With no data caps, throttling, or interruptions, your organization can enjoy crystal-clear video conferencing, seamless streaming, rapid large-file transfers, and smooth operation of critical online systems.

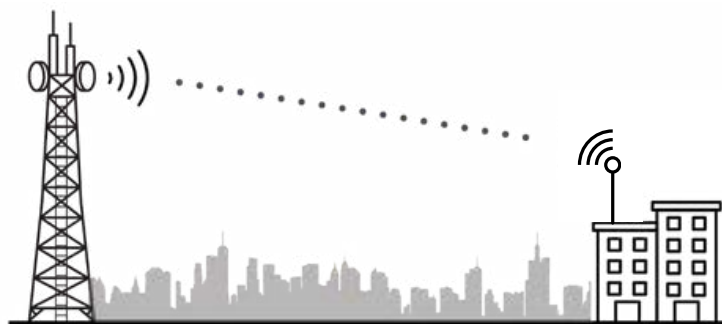
Ideally suited for enterprises and institutions where uninterrupted, high-capacity, and secure connectivity is essential to success.



Customized Internet solution for large Enterprises



Dedicated Support for Clients



Dedicated Unlimited Data Plan – Engineered for Excellence. Built for Performance.

Potential Clients:

Corporate Headquarters & Multinational Offices, Banks & Financial Institutions, Government Agencies & Parastatals, Universities & Large Educational Institutions, Media Houses & Broadcast Studios, Manufacturing & Industrial Facilities, Large Hospitals & Healthcare Networks, Hotels & Resorts with High Guest Volume, Large Religious Institutions

Our Service Offerings

Unlimited Data

Unlimited Data Internet Package

High-Performance Connectivity for Modern Businesses

Designed for small and medium-sized enterprises, our Point-to-Multi-Point (PTMP) solution delivers reliable, high-speed internet connectivity engineered to support organizations that rely on consistent performance for their daily operations.

With guaranteed speeds of 15 Mbps and above, this solution ensures uninterrupted performance for bandwidth-intensive tasks such as video conferencing, high-definition streaming, large file transfers, and more — all with no data caps or throttling.

Whether your business operates through cloud-based platforms, collaborative tools, or customer-facing applications, our PTMP service provides the speed, stability, and scalability necessary to enhance productivity and drive sustainable growth.



Scalable Solution



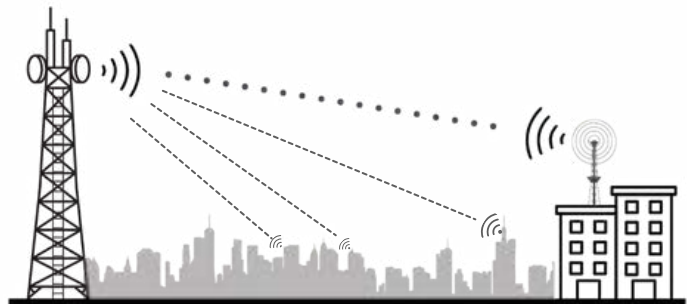
Access Control Features



Maintenance & Support



Affordable Subscription Rates



Empowering businesses with performance they can depend on.

Potential Clients:

Retail Stores & Supermarkets, Schools & Training Centers, Clinics & Small Medical Facilities, Hotels & Guesthouses, Churches & Religious Centers, Co-Working Spaces, Business Centers / Cyber Cafés, Logistics Companies & Small Warehouses, NGOs & Community-Based Organizations, etc.

Our Service Offerings

SpeedyFlex

SpeedyFlex Internet Package

Enterprise-Grade Connectivity for Growing Businesses

The SpeedyFlex Internet Package is specifically designed for small and medium-sized enterprises (SMEs) that rely on stable, high-speed internet to power their daily operations. Built on a Point-to-Multi-Point (PTMP) network, this solution delivers reliable and consistent connectivity tailored to meet the unique demands of modern businesses.

With affordable sign-up options and no costly installation or equipment procurement, SpeedyFlex makes enterprise connectivity accessible. Speedylink Communications provides and maintains all necessary equipment for a 24-month lease period, ensuring businesses enjoy seamless service without the burden of upfront infrastructure costs.

Whether you're launching a new venture or expanding an existing operation, SpeedyFlex offers the scalability, reliability, and unlimited data your business needs to thrive. Available packages range from 1–3 Mbps, 4–6 Mbps, 6–8 Mbps, and 8–10 Mbps, giving you the flexibility to choose a plan that fits your operational requirements.



Scalable Solution



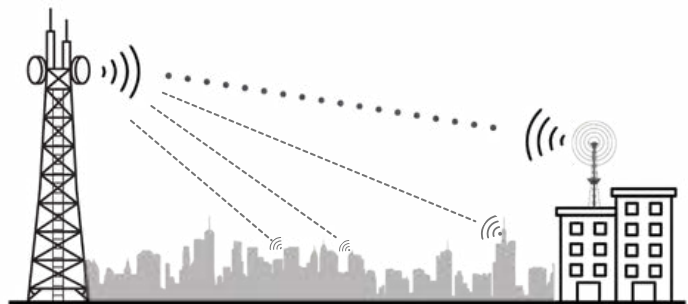
Access Control
Features



Maintenance &
Support



Affordable Sign
Up Rates



SpeedyFlex – Reliable. Scalable. Business-Ready.

Potential Clients:

Retail Stores & Supermarkets, Clinics & Small Medical Facilities, Small Warehouses, NGOs & Community-Based Organizations ,etc.

Our Clients

Dedicated Unlimited Data



Unlimited Data



Our Approach



Request for your
GPS of your
Location



Link Budget



Conduct a
Physical Survey



Send your a
Quotation

Step 1

You can get this by opening Google Maps on your phone, tapping and holding on your location, then copying and sending the coordinates (e.g., 7.1604, 3.3515) or using the “Share Location” feature on WhatsApp or Google Maps.

Step 2

This is a calculation used in wireless communication to determine the strength and reliability of a signal from the transmitter to the receiver. It takes into account all gains (like distance, topography and obstacle) in the system to ensure the signal remains strong enough for effective communication.

Step 3

Conducting a Physical Survey for fixed wireless internet involves visiting the customer’s location to assess line-of-sight to the nearest base station, check for physical obstructions (such as trees or buildings), evaluate mounting options for antennas, and determine the best cable routing and evaluate the number of devices to be used before installation.

Step 4

Sending a Quotation involves providing a detailed cost estimate based on the client’s specific requirements, including the scope of service, the amount of bandwidth needed, installation details, and any additional equipment or support services. This helps the client understand the investment required and ensures transparency before project commencement.

Case Studies

Challenge

A 30-room mid-sized hospitality establishment located in the heart of Abeokuta, prides itself on providing premium comfort and a seamless guest experience. With increasing reliance on online services by business travelers, tourists, and remote workers, internet access became a critical component of guest satisfaction and operational efficiency.

Prior to 2024, the hotel operated on a limited data-capped internet package using vouchers and access-code-based login systems. Internet vouchers were generated per guest or per device and were valid for a specific volume of data (e.g., 1GB per device, per night).



Incomplete Wi-Fi Coverage

- **Guest Complaints:** Several rooms and common areas like the swimming pool lounge and rooftop bar had poor or no signal.
- **Infrastructure Limitation:** The existing router placements and range extenders were inadequate for full-property coverage.



Voucher/Access Management Hassles

- **Operational Overhead:** Front desk staff spent time generating and troubleshooting vouchers.
- **Multiple Devices:** Guests with multiple devices (phones, tablets, laptops) required additional vouchers.
- **Expiry Issues:** Guests frequently exceeded their daily limit, requiring new vouchers or manual resets.



Hidden Costs of Data-Capped Plans

- **Monthly Budget Overruns:** The hotel paid for excess data usage every month, often unpredictably.
- **Unhappy Guests:** Guests often had to request additional access or complain about throttled speeds after data limits were exceeded.
- **Lost Business:** Negative reviews occasionally mentioned poor or restricted internet, impacting booking rates.

Solution

In partnership with SpeedyLink Communications, the hotel transitioned to a 12-15Mbps Unlimited Dedicated Internet Plan with the following improvements:

- **Infrastructure Upgrade:** Installed high-performance indoor and outdoor Wi-Fi access points strategically to ensure seamless coverage.
- **Bandwidth Allocation:** Implemented bandwidth control to prevent abuse while ensuring smooth connectivity for all users.
- **Simplified Guest Access** with a voucher management system

Outcome

After switching from a voucher-based limited internet plan to a fixed unlimited dedicated plan, the hotel under review saw significant improvements:

- **Cost Savings:** Monthly internet expenses dropped from a variable ₦75,000–₦90,000 to a predictable ₦65,000.
- **Fewer Complaints:** Guest complaints related to internet access, speed, and voucher issues decreased by 90%.
- **Increased Efficiency:** Staff time spent on managing internet-related issues reduced from up to 5 hours weekly to less than 1 hour.
- **Higher Occupancy:** The improved internet experience led to better reviews and a noticeable increase in return guests, particularly digital nomads.
- **Full Coverage:** Wi-Fi coverage expanded from 60–70% of the property to 100%, reaching all rooms and common areas.

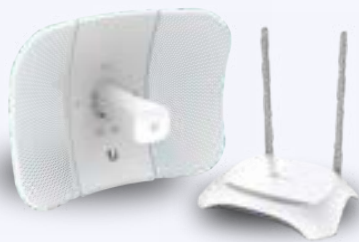
Reliable Connectivity Backed by a 97.5% SLA

Backed by SpeedyLink Communications' 97.5% Service Level Agreement (SLA), the hotel—like many of our corporate clients—benefits from highly reliable internet connectivity that meets the growing demands of today's digital environment. This strong level of uptime guarantees minimal disruptions, seamless streaming, and consistent performance for both work and leisure, enhancing guest satisfaction and reinforcing the hotel's reputation for dependable service. In the hospitality industry, it's not just about providing internet—it's about delivering trustworthy, uninterrupted access every time.

Conclusion

The move to a unlimited bandwidth solution allowed to offer the hotel consistent, high-quality internet across the property while also reducing operational costs and staff workload. This case underscores the value of reliable connectivity in today's hospitality industry, where guest satisfaction often hinges on digital convenience.





Pricing Options

Get a Quote based on the scope of project.

Dedicated Unlimited Data-Option A & B

Get a Quote based on the scope of project.



- ✓ Mimosa /Ubiquiti Radios (2 Units) Covers 8km+ with optional noise reduction features.
- ✓ Cables
- ✓ Access points (indoor/outdoor)
- ✓ Pole(s)
- ✓ Installation Accessories

Unlimited Data

Get a Quote based on the scope of project.



- ✓ Ubiquiti Gen2 (1 Units) Reaches 5km
- ✓ Cables
- ✓ Access points (indoor/outdoor)
- ✓ Pole(s)
- ✓ Installation Accessories

Speedy Flex

Get a Quote based on the scope of project.



- ✓ Pole(1)
- ✓ Cables
- ✓ Installation accessories and Cost
- ✓ Router(1)
- ✓ Internet Radio (1)

Sign Up : N80,000

N.B: SpeedyLink Communications owns all equipment and accessories, while offering Unlimited data to the client. Extra Accessories based on expanded scope of project will be added to the Sign Up cost. Installation comes with a free support on the first month of installation while the recurring monthly subscription is based on the recommended bandwidth.

Project Timeline

Mostly spans within 1-6 Working Days.

Day 1-2

Working Days



Confirmation of payment

Upon a successful survey report, a quotation for the installation, (*which captures the equipment needed to ensure optimal internet connection*) will be sent to the customer, within 48 hours of completing the survey.



Configuration of Equipment

Here the configuration of CPEs (radios and at the repeater station simultaneously) as well as Access Points on site is carried out. These are also carried out within 48-72 hours after payment based on the quotation sent.



Installation

Upon installation, testing (experience tests and on-site computing equipment tests) and quality assurance exercises are carried out to ensure conformity to expectation before leaving customer's site.



Hand Over & Training

After installation and testing, our technical team would run a short series of training on the basic modes of usage, like password change, and other things that the customer may need to know about their internet use and access. The entire process will take less than 3-5 days from survey to full deployment.

Contact Us



Website

www.speedylinkcomm.org



Phone

+234 911 631 1962



HQ address

3b, Ola Aremu Sanni Close, off Kuforiji Olubi Drive,
Adigbe, Abeokuta, Ogun State.



E-mail

customercare@speedylinkcomm.org



Social Media



@speedylink_communications



@speedylink2023

Scan & Chat:





...unlimited data at blazing speed.